

The latest version of Google Sketchup is Version 7, it can be found at the following address:

<http://sketchup.google.com>

Follow the instructions for downloading (whether for a PC or for a Mac) Sketchup. Do not download Google Sketchup Pro 7 unless you want to pay for the full version of Sketchup. Download the program and start the program installation. (The download is approximately 33 Mb).

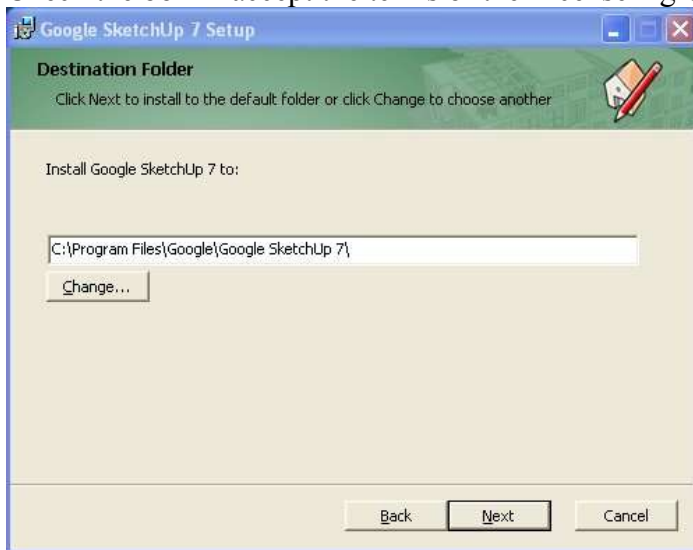
When you run the download the install screen starts with:



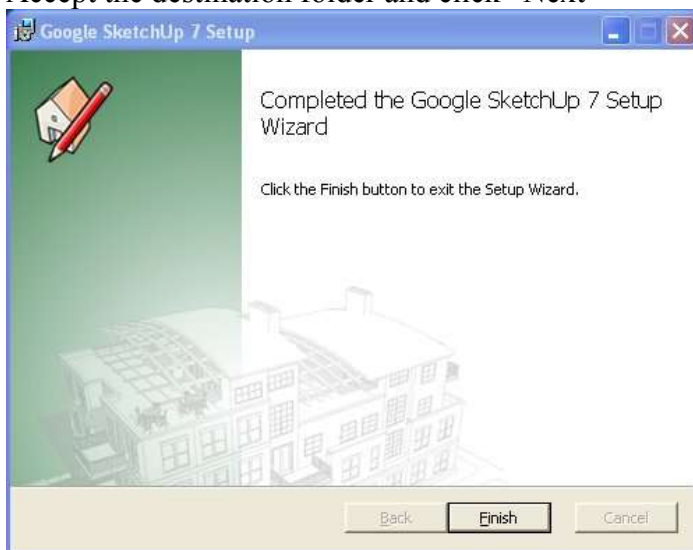
Click "Next"



Check the box “I accept the terms of the License Agreement” and click next.



Accept the destination folder and click “Next”



And the installation is complete.

From the desktop click the icon for Sketchup Ver 7 to start the program.

When sketchup starts for the first time you will get a screen asking you to choose a template. If you are planning on using sketchup for a lot of different type of drawing work such as architectural drawings, woodworking, or general drawing you will want to choose your template at each startup of Sketchup. If you are like most you will be using this exclusively for woodworking. Sketch up starts with the opening splash screen.

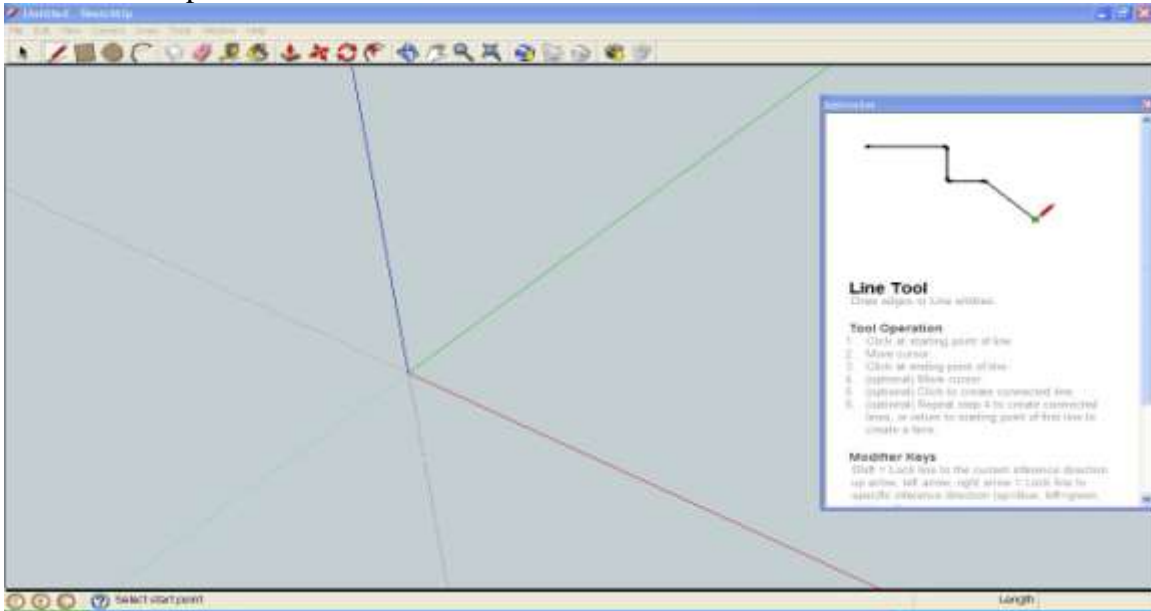


Click on the “Choose Template” button



Uncheck the “Always show on startup” and scroll down to the “Product Design and Woodworking – Inches” and click on the “Start using SketchUp” button. If by chance you want to change the template it can be changed from sketchup by going to Window→Preferences→Template and a new template can be selected.

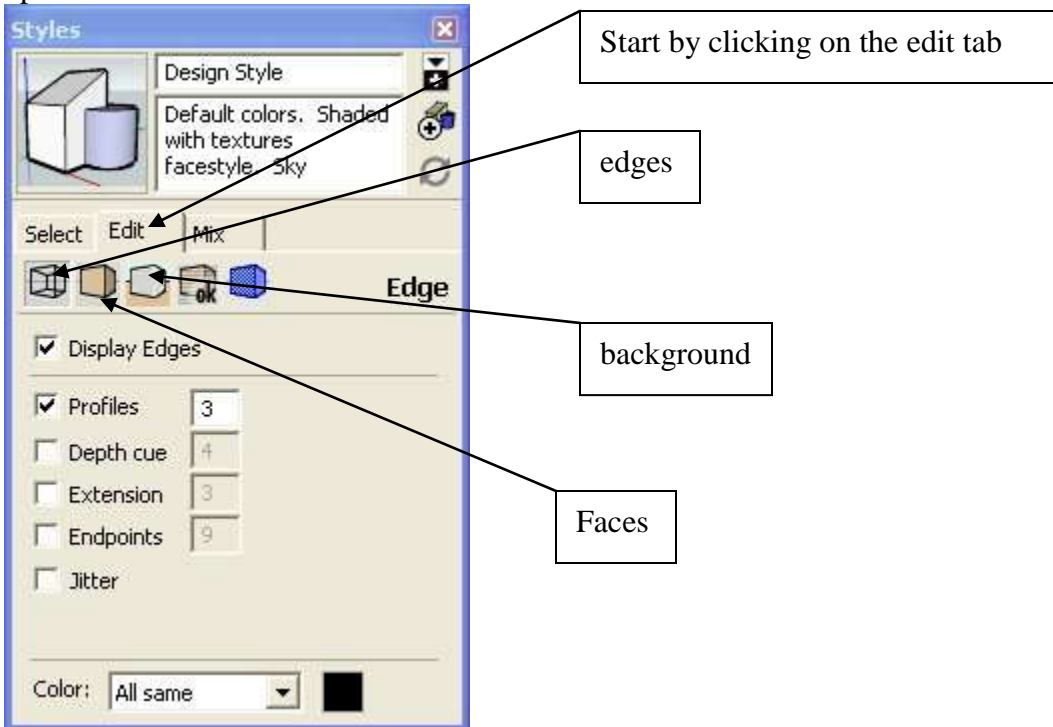
When sketchup starts it should look about like this:



Close the “Instructor” window.

You are now ready to use sketch up. There are a few changes I recommend to the default configuration as they really don’t apply to woodworking or they just end up using memory and processor speed.

Start by clicking on Window→Styles. A dialog box looking like the following will come up.



Select the edit tab in the dialog window and uncheck the “Profiles” Which this option checked the edges of the components appear like they have been sketched rather than as clean solid lines.

Next click on the faces box and the dialog back will come up as follows:



First uncheck the “Enable transparency”. Un-checking disables transparency in the model. It uses a lot of processor to do the transparency. If you need to see something inside your work it is just as easy to switch to X-ray view, do your check and then switch back. Next click on the gray box next to “back color” and the following dialog box comes up.



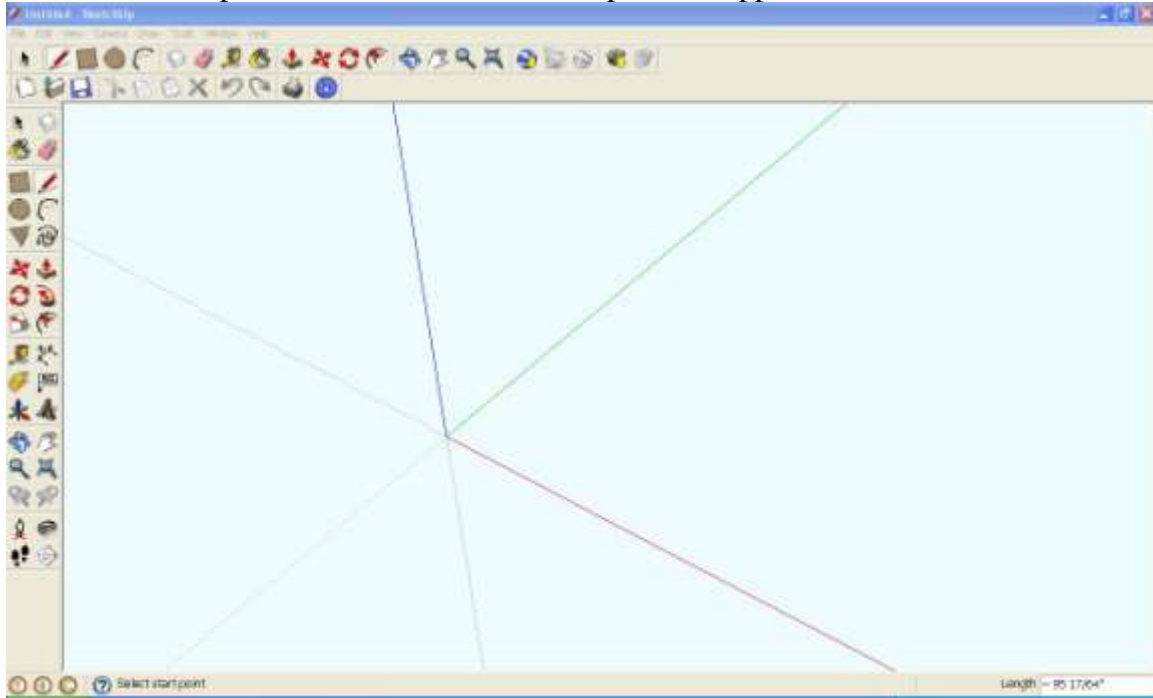
Move the square box in the color palette into the pink area and move the slider in the slider bar to the top. This provides maximum contrast between front and back faces. The reason for this will be explained later in the presentation. Click OK, the dialog goes away and then click on the background box.

The following dialog box comes up.

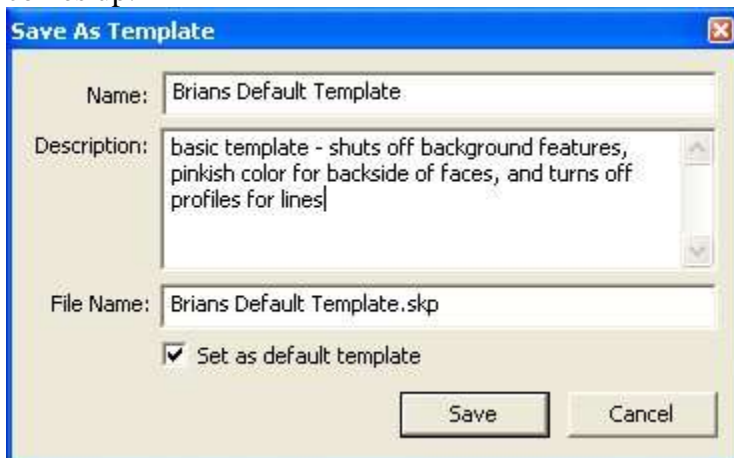


Uncheck the box for Sky. When designing furniture you really do not care to have a sky or ground. This applies best when designing a house or doing landscaping. Click on the grey box next to “Background” and again the color palatte dialog box comes up. Move the slider bar to the top and this makes the background a brighter whiter color. Click okay and then close the styles dialog box by clicking on the red x in the upper right hand corner.

Next, click on View→Toolbars→Large Tool Set and View→Toolbars→Standard. This adds a solid compliment of icons. The sketchup should appear as follows:



Next this needs to be saved as a template so that the configuration comes up every time sketchup is started. Click on File→Save as Template.... The following Dialog box comes up:



Enter name of the template, the description and be sure to check the “Set as default template” and click on “Save”

Sketchup is now ready for use